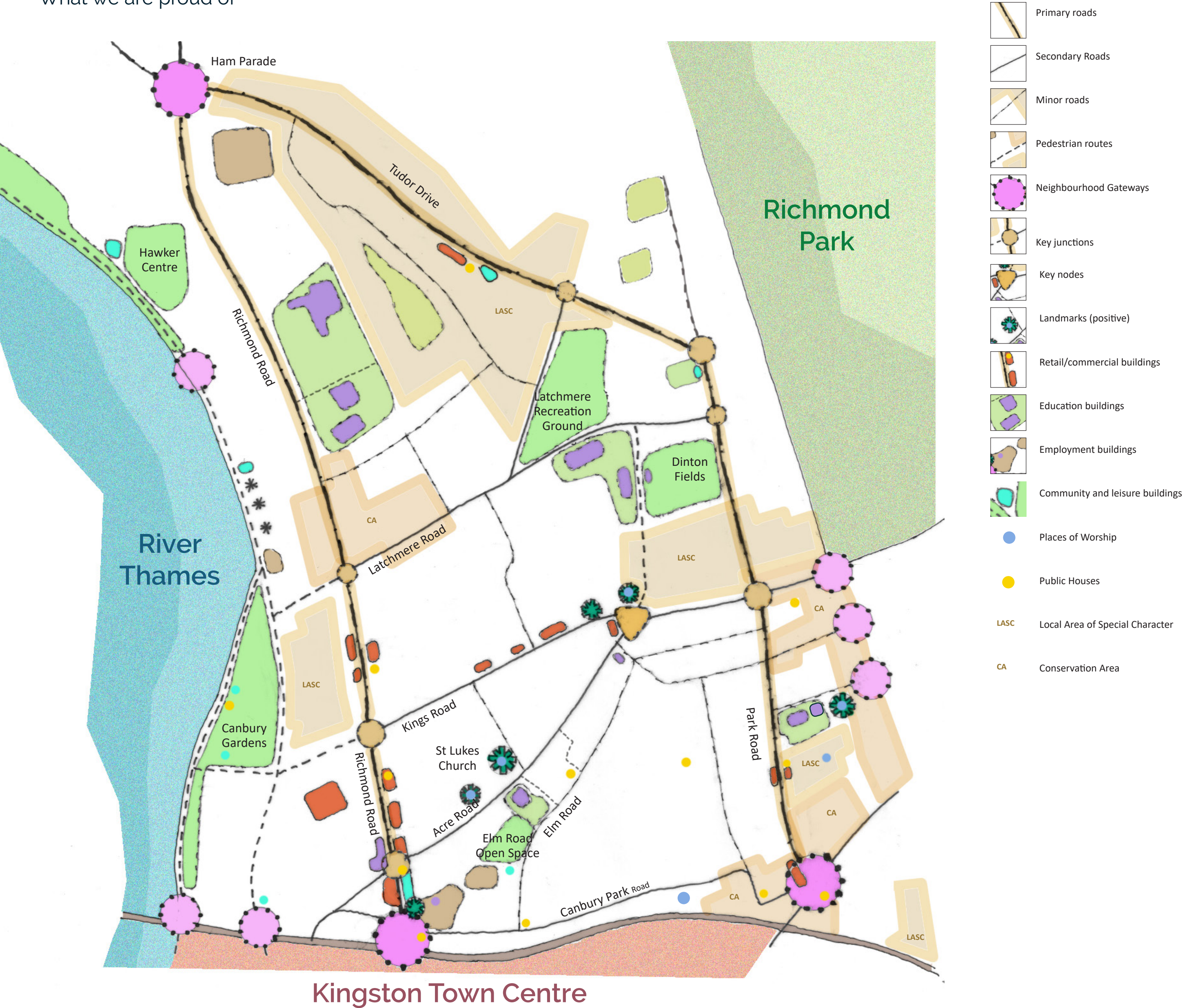


Our neighbourhood today:

What we are proud of



Kingston Town Centre

... and opportunities for improvement



Summary:

An attractive residential neighbourhood but with poor permeability

North Kingston is bounded by Richmond Park, the River Thames and Kingston town centre.

It has two key routes through the neighbourhood, Richmond Road and Park Road/Tudor Drive. These largely perform as the perimeter and are vehicular dominated.

There is one major positive landmark, St Lukes Church and a range of local landmarks to the south of the neighbourhood.

There are a series of local retail/business parades, with clusters of education/community buildings. Employment is mostly clustered to the northern and southern gateways.